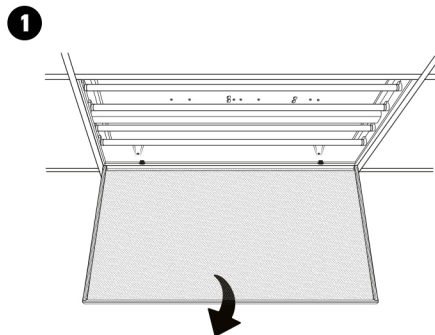


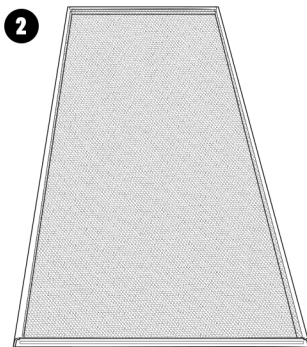
OCTO PRINTS™
and Lighting

POLYCARBONATE LIGHT PANEL INSTALL GUIDE

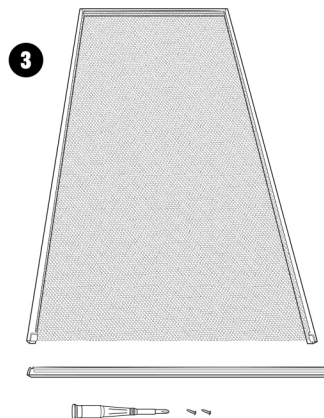
FLUORESCENT FIXTURES:



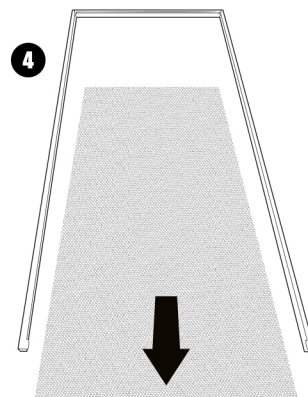
Open the tabs to unlock the frame, then allow it to swing downward.



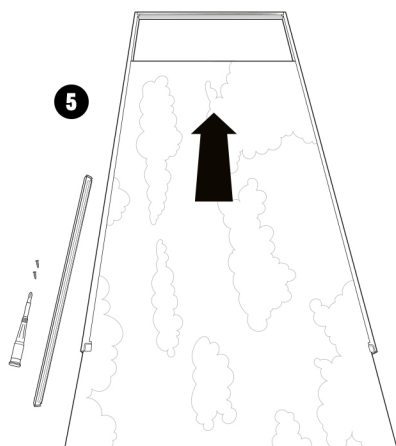
Unhinge the frame from the ceiling and place it on a clean flat surface.



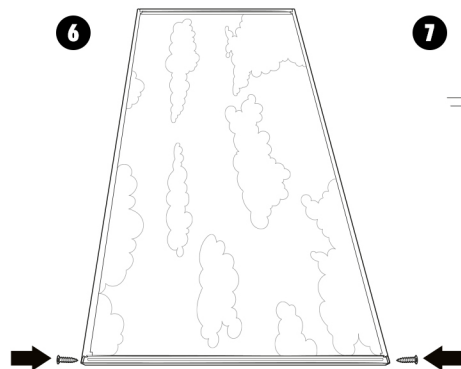
Using a screwdriver (often a pentelobe 5 point bit), remove one short side of the frame.



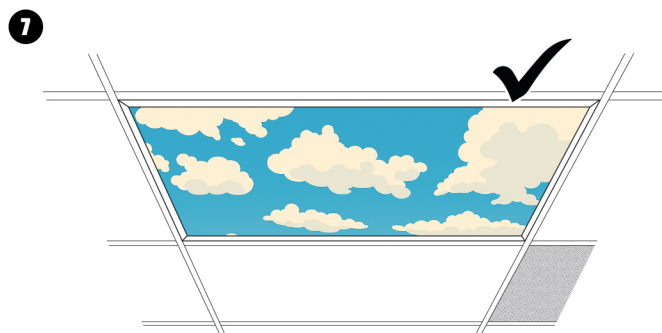
Remove the plastic diffuser by sliding it out the open side of the frame.



Open the tabs to unlock the frame, then allow it to swing downward.



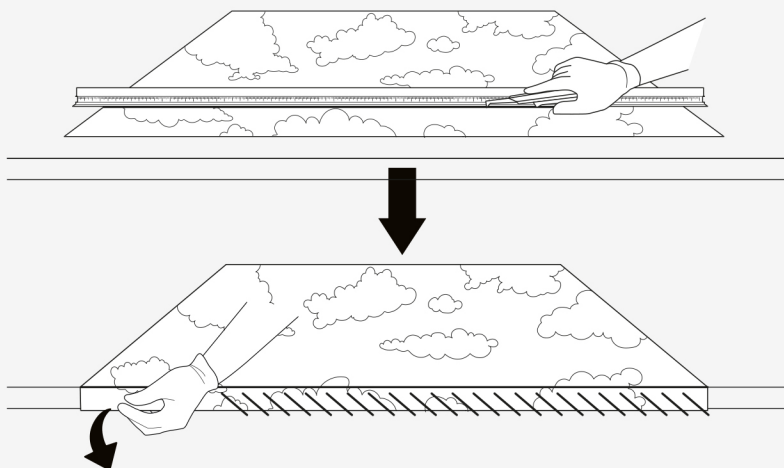
Unhinge the frame from the ceiling and place it on a clean flat surface.



Using a screwdriver (often a pentelobe 5 point bit), remove one short side of the frame.

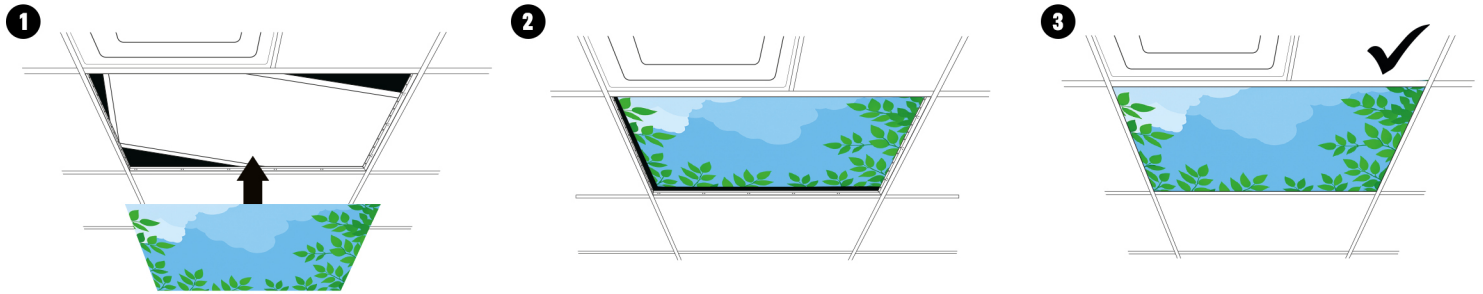
HOW TO CUT YOUR PANEL:

1. Measure and mark your panel to your desired dimensions.
2. Using a straight edge, score the panel repeatedly with a utility knife blade.
3. Once a deep scoreline is cut, position the panel with the edge of your table under the scoreline and the offcut overhanging the side of the table.
4. Carefully apply pressure to break away the offcut.

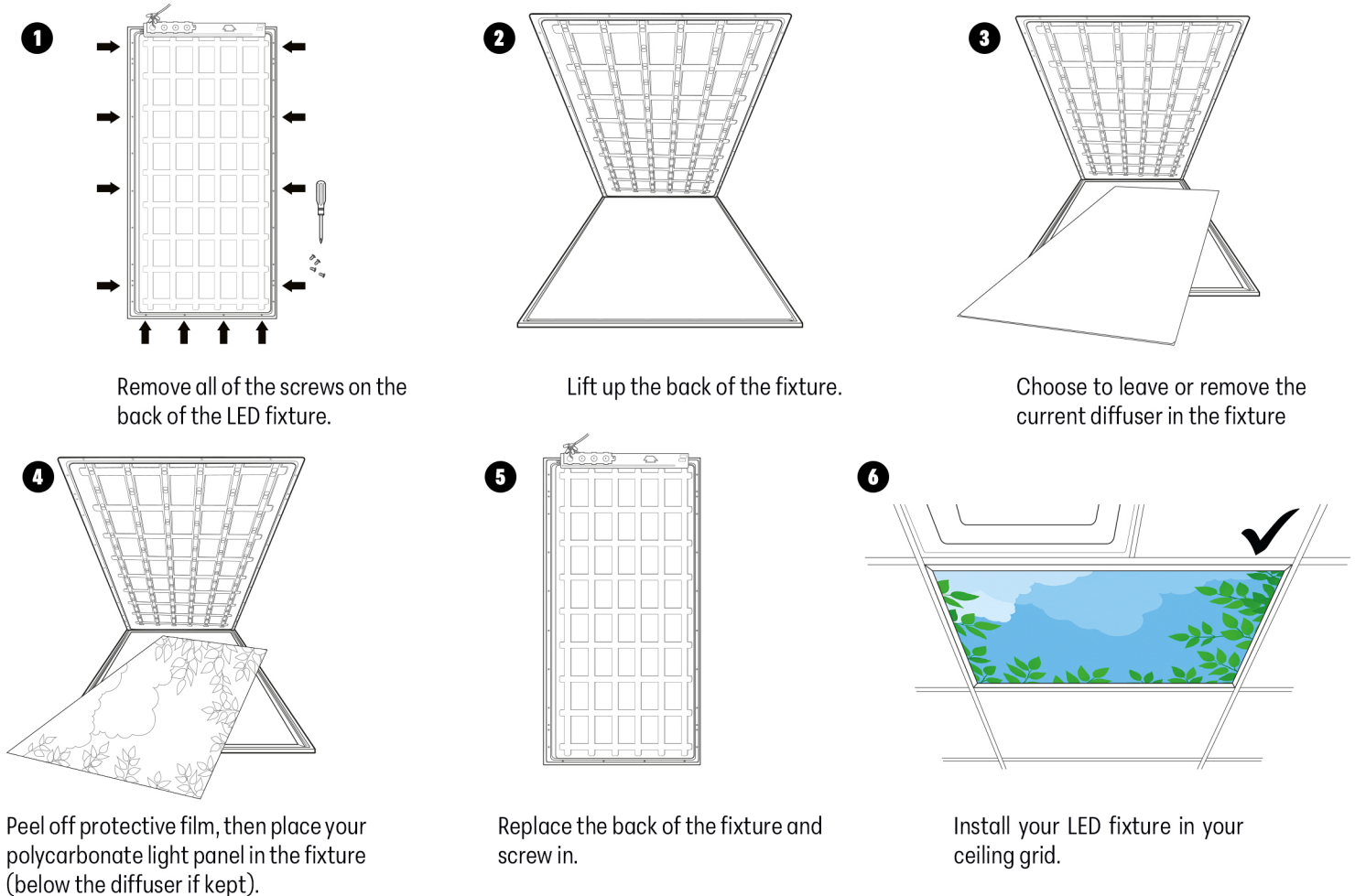


AFTER MARKET INSTALL:

Peel off protective film, then gently push up your LED fixture and slide in your Octo Prints polycarbonate light panel between the LED fixture and the ceiling grid.



CONTRACTOR INSTALL:



HOW TO CUT YOUR PANEL:

1. Measure and mark your panel to your desired dimensions.
2. Using a straight edge, score the panel repeatedly with a utility knife blade.
3. Once a deep scoreline is cut, position the panel with the edge of your table under the scoreline and the offcut overhanging the side of the table.
4. Carefully apply pressure to break away the offcut.

